

15750 Harlem Avenue Site

SITE SPECIFICATIONS

Location: Harlem Avenue and 157th Street

Municipality: Orland Park

Existing Zoning: BIZ General Business

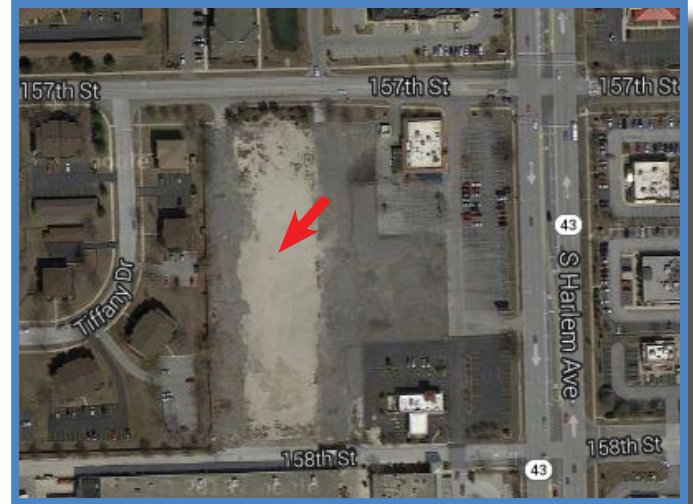
Existing Use: Vacant land

Desired Use: Commercial Mixed Use

Approximate Size: 6.2 acres including bank building

Frontage along Harlem Avenue: 400 feet

Offered by: Intercontinental Real Estate & Development Corp.,
630-684-0290



Site Highlights

- Harlem Avenue is a State Highway and major north-south transportation corridor with daily traffic counts that average over 40,000 vehicles per day in portions of the Corridor
- Buildings on this site have recently been demolished, leaving the site ready for development
- Adjacent users include a newly renovated Meijer, Cooper's Hawk Restaurant, Panera Bread and Five Guys Burgers and Fries

Demographics

	<u>Within 1 Mile</u>	<u>Within 3 Miles</u>	<u>Within 5 Miles</u>
Population (2000)	11,839	93,079	189,240
Population (2010)	11,982	94,961	198,134
Households (2000)	4,596	33,679	67,985
Households (2010)	4,688	34,639	71,624
Median HH Income	\$69,114	\$74,860	\$72,640
Median Age	43.0	39.3	39.5
College Degree %	35.6%	37.3%	36.8%

Source: URS Harlem Avenue Corridor Study, www.harlemcorridor.com

HARLEM
CORRIDOR
AVENUE

For more information, please contact:

Village of Orland Park

14700 Ravinia Avenue • Orland Park, IL 60462

www.orland-park.il.us • 708.403.5300